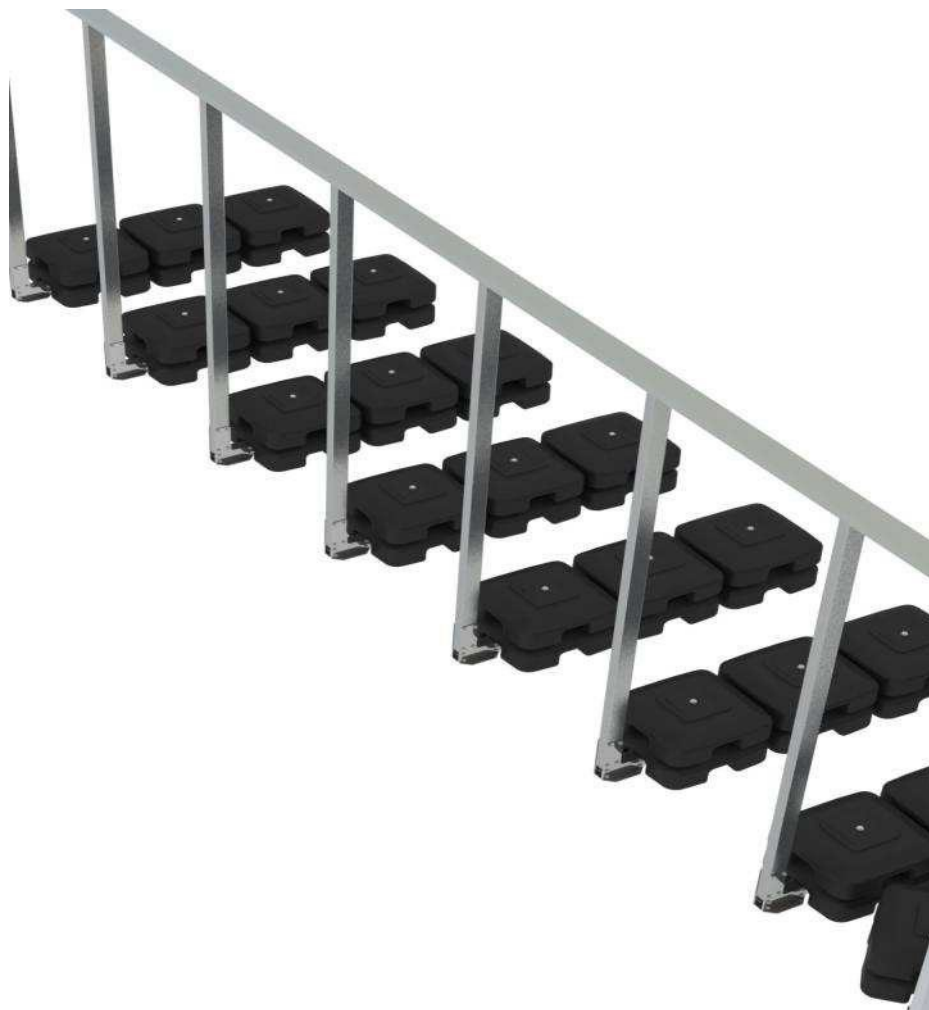




ROOF CLADDING STRUCTURE

PARE-CO®



Installation **INSTRUCTIONS**
Registered trademark N° 12/3904126

PREAMBLE	4
1. DESTINATION	4
2. PRINCIPLE	4
3. NOMENCLATURE	5
4. PACKAGING AND STORAGE.....	6
4.1. Packaging.....	6
4.2. Storage.....	6
5. RESPECT FOR THE ENVIRONMENT	6
6. IMPLEMENTATION	6
6.1. Dimensions	6
6.2. Spacing between uprights.....	6
6.3. Implementation	6
6.4. Angles.....	10
6.5. Overall dimensions.....	10
6.6. Examples of possible configurations	11
7. HABILLAGE	11
8. MAINTENANCE.....	12
9. ASSURANCE AND QUALITY.....	12

Preamble

A number of unsightly pieces of equipment are installed on our roofs. For practical and aesthetic reasons, when these are visible, the choice of covering and protecting them is often a complex one.

This design avoids the problems often encountered when masonry walls or metal structures are built and fixed to the support concealing the equipment, which generates additional constraints in terms of watertightness and risks of thermal bridge problems. A calculation note is provided for this purpose.

PARE-CO®, an effective response to this problem:

- Independent of the structure and waterproofing complex
- Easy to install
- Easy to dismantle and assemble
- Modular and versatile, it can be configured in a number of ways
- Multidirectional, its dimensions can vary
- Easy to visit, easy access to equipment

1. Destination

PARE-CO is a made-to-measure cladding designed to create a visual screen in front of equipment and fittings for roofs and flat roofs.

PARE-CO® is not intended for use as a railing.

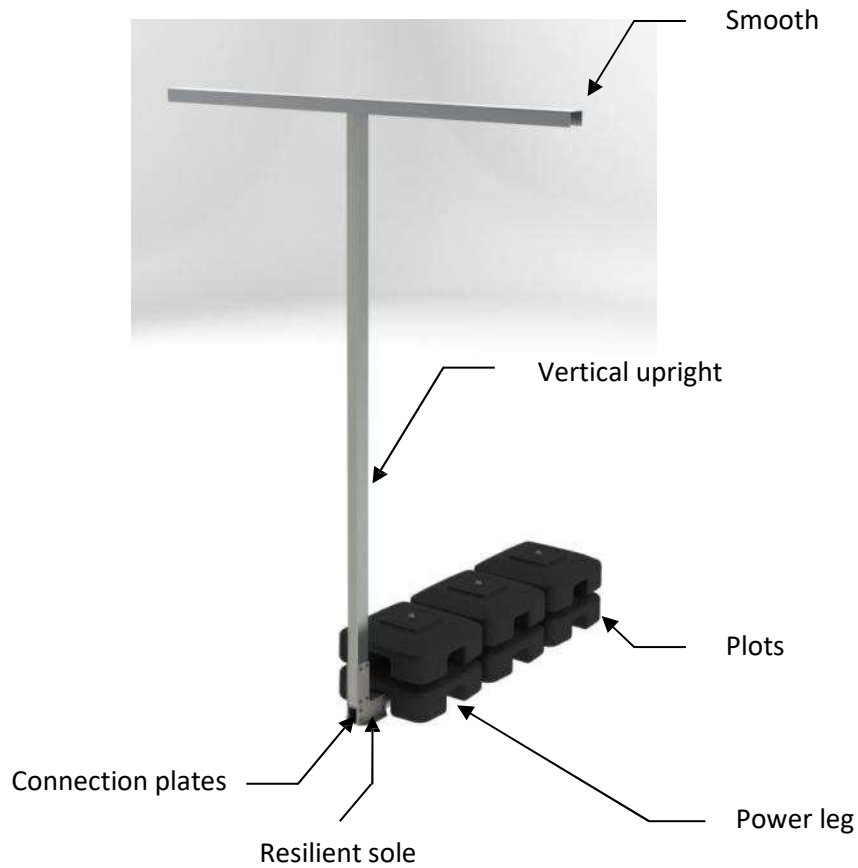
2. Principle

PARE-CO® is a made-to-measure privacy screen mounted on an independent framework that does not pass through the waterproofing or roofing complex.

PARE-CO® is a privacy screen that hides equipment on roofs and flat roofs. It is simply laid over the roofing complex.

This structure can be covered with a wide range of materials such as wooden slats, louvres, metal cassettes, expanded metal, gratings or any other openwork covering¹.

¹ Non-exhaustive list, please contact us



3. Nomenclature

Designation	Dimensions	Material	Thickness
Vertical upright	H Minimum = 0.5m H Maximum* = 1.65m	Aluminium	Tube 60*40*3
Power leg	Minimum: 500mm (Angle) Max: 1300mm (Main)	Aluminium	Tube 60*40*3
Horizontal top rail	U 60*40m2mm L=3000mm	Aluminium	2 mm
Plot	400*400*145mm 27 kg	Concrete infill HDPE (high-density polyethylene) casing	
Resilient sole	100*40mm	Recycled rubber	10mm
Screw for upright	Self-drilling machine	6.3*20	Stainless steel
Screws for rails	Self-drilling machine	6.3*20	Galva
Screws for studs	Long screw with threaded end	M10*250	Zinc
Corner adapter	Developed 140mm L = 3000 mm	Aluminium	2 mm

*in exposed zone 2 - may vary according to geographical area and specific conditions.

4. PACKAGING AND STORAGE

4.1. Packaging

PARE-CO® uprights are pre-assembled and packed on pallets. The blocks are packed on pallets.

4.2. Storage

PARE-CO® should preferably be stored away from adverse weather conditions and wide variations in temperature.

5. RESPECT FOR THE ENVIRONMENT

The excellent recyclability of the aluminium, HDPE casing and concrete makes this a product that perfectly meets today's requirements in terms of respect for the environment.

6. IMPLEMENTATION

6.1. Dimensions

PARE-CO® has a footprint of 1.30m for configurations with 6 studs.

The height varies according to demand. It can range from 0.5m to 1.65*m, depending on the spacing between the uprights, the geographical area of installation and the filling level of the cladding.

**in exposed zone 2 with 100% filling and optimised spacing of 0.93m.*

6.2. Spacing between uprights

The maximum spacing between PARE-CO® is determined by the geographical area in which the privacy screen is to be installed.

Closer spacing may be required in accordance with the technical opinions or technical manuals of the cladding manufacturers. The spacing between PARE-CO® must not exceed the minimum spacing specified in the technical opinion for the cladding chosen.

The spacing can also be reduced to suit the height required or the fill level of the trim selected.

6.3. Implementation

In the absence of the first two, it is the responsibility of the project owner, the building contractor or the company carrying out the installation to check that the supporting structure is suitable for the installation of PARE-CO®.

It is essential that the installation team read this document in its entirety before beginning installation.

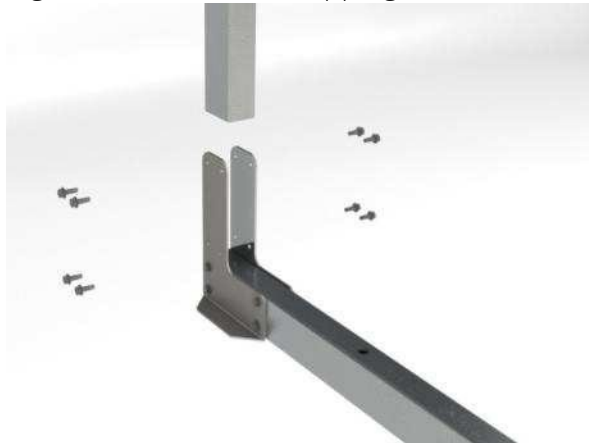
When fitting PARE-CO®, we strongly recommend starting at a corner.

Precautions for use

Carefully prepare the surfaces and visually check that the PARE-CO has not suffered any damage during transport or storage (dents, bumps, fastenings, deformations, etc.).

Step 1: Assembling the uprights

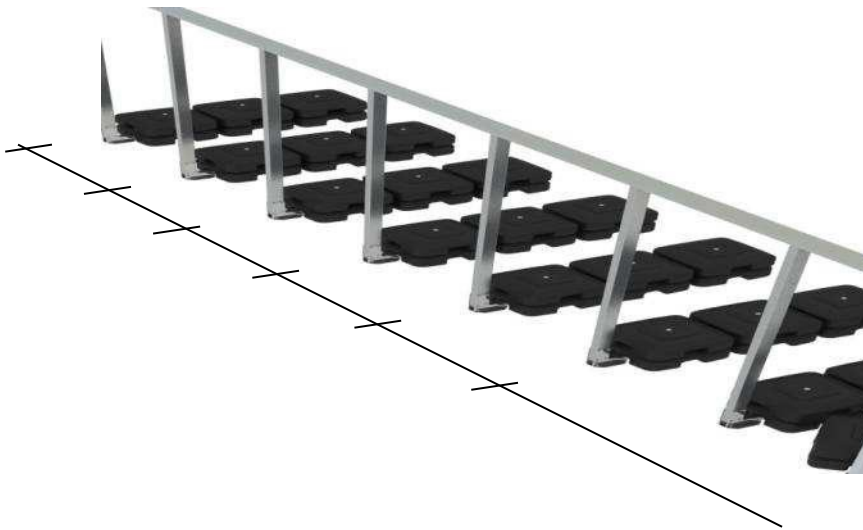
Place the upright on the strut. The pre-assembled plates pass on either side of the strut. Secure the assembly using stainless steel self-tapping screws.



Step 2: Fitting the uprights

Place the resilient pads directly on the substrate (under the ends of the PARE-CO®), taking care to keep it clean so as not to damage it, and position the studs according to the layout plan drawn up beforehand or the centre-to-centre distance determined beforehand.



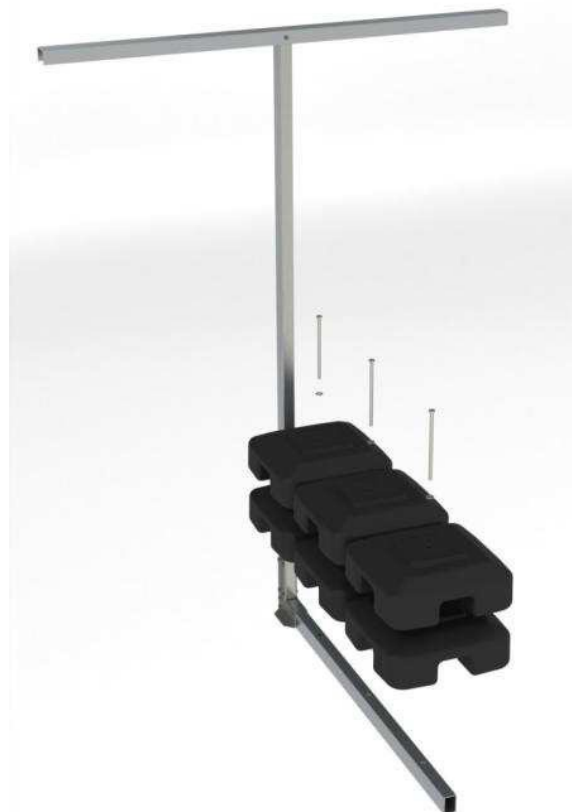


Stage 3: Installing the studs

Place the studs on the struts and ensure that the uprights are properly aligned to make it easier to fit the rails in the next stage.

Fix the concrete blocks to the support, aligning the hole in the blocks with the insert in the support. Secure the blocks to the strut using the M10 threaded bolt.

 Do not overtighten or the insert may come out of its housing)



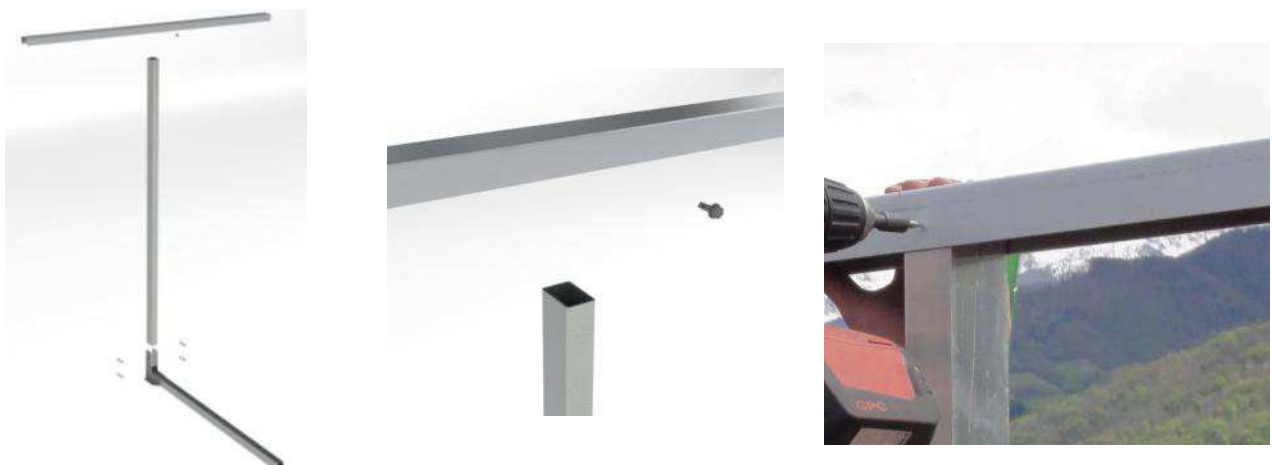


The number of concrete blocks will depend on the study carried out by our services, depending on the geometry of your terrace and the geographical area in which you are going to install your system.

Step 4: Fitting the rails

Position the horizontal rail (aluminium U) on the PARE-CO® uprights, adjust the flatness of the rail and fix it using self-drilling screws. The rail is fixed on the inside of the privacy screen so as not to interfere with the installation of the cladding.

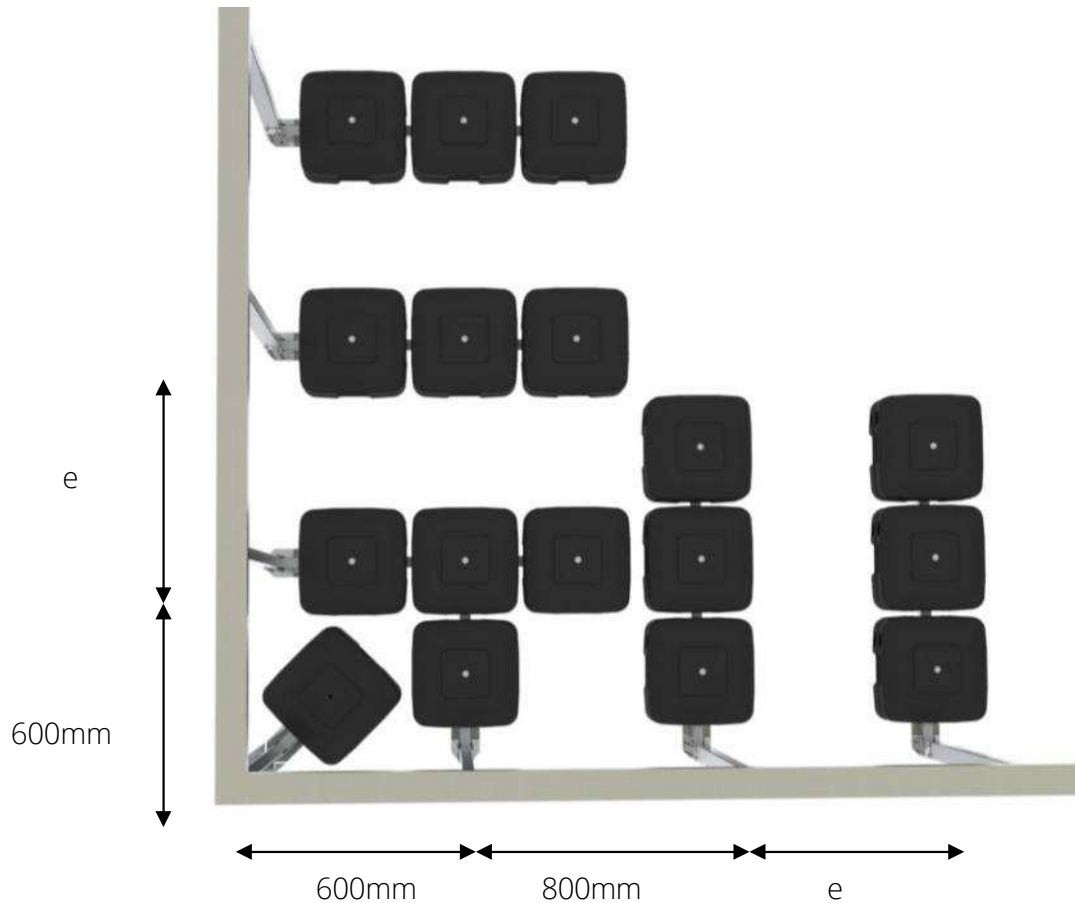
The U initially designed is symmetrical, but it can be manufactured with different dimensions on request for greater adjustability.



The rails are joined together using aluminium brackets to be fixed on the inside.

6.4. Angles

At the corners, the uprights must be arranged as shown in the diagram below (6 stud configuration).¹



e: spacing defined by the study

6.5. Overall dimensions

PARE-CO® is supplied as standard with an overall dimension of 1300mm (in 6-block configuration).

PARE-CO® is designed to be installed directly on the waterproofing. The uprights must be arranged so as to maintain a maximum spacing of 1500mm.

The minimum width is that of the stud, i.e. around 400mm.

¹ Please contact us to discuss other configurations

6.6. Tables showing examples of possible configurations

ZONE 2 Exposé
e_{max} = 0,93m

Hauteur (m)	0,5	0,5	1	1	1,25	1,25	1,5	1,5	1,75	1,75	2	2
Nb plot	4	6	4	6	4	6	4	6	4	6	4	6
Taux remplissage	100%	100%	100%	100%	87%	100%	61%	100%	45%	89%	34%	68%
Taux remplissage	50%	50%	60%	60%	70%	70%	80%	80%	90%	90%	100%	100%
Nb plot	4	6	4	6	4	6	4	6	4	6	4	6
Hauteur (m)	1,65	2,34	1,51	2,13	1,40	1,98	1,31	1,85	1,23	1,74	1,17	1,65

7. CLOTHING

PARE-CO® can be clad in a variety of ways (⚠) . However, solid cladding is not recommended.

Examples of packaging¹ :

- ODCO nestable cassettes or equivalent
- Wooden slats
- Solid or perforated sheets
- Gratings (PVC, wood, metal)
- Wooden, metal, composite and PCA (Polycarbonate alveolar) louvres
- Expanded or perforated metal
- Polycarbonate slats
- ...



When dressing, it's best to start at the bottom.



Example of metal louvres

¹ Non-exhaustive list



Example of a wooden slat cladding



PARE-CO®

8. MAINTENANCE

As far as the structure and ballast are concerned, maintenance consists of an annual visit to check that the components (structure, ballast) are in the right place.

Check that all the elements are properly fixed. For cladding, follow the manufacturer's instructions.

9. QUALITY ASSURANCE AND

PARE-CO® is inspected at the factory.

PARE-CO® is guaranteed for one year against any manufacturing defect, under normal conditions of use. This guarantee includes the replacement of parts found to be defective by ODCO.

The following are excluded from the warranty: support, deterioration of parts during testing or use for which the product is not intended, normal wear and tear, oxidation, exposure to a corrosive atmosphere, modifications or repairs not prescribed by ODCO, inappropriate storage, poor maintenance, damage due to accidents or negligence.